

Feb 2, 2016



# BELL NEWS FORTNIGHTLY



*We're back!!!*



# CALLING ALL FUNDRAISERS NEW & OLD!

**We need you!** **AT THE BELL PRIMARY 2016 FUNDRAISING SUGGEST FEST**

Got an idea? Want to be part of the plan? Been meaning to come along and find out what's going on with Bell Fundraising?

Now's your chance. No strings attached ;)

Bring your good selves and your brilliant ideas to a workshop style evening to help us talk and chalk out a plan for 2016!

**THURSDAY 18TH FEBRUARY 2016**

**7:00-9:00PM,**

**MULTI-PURPOSE ROOM, BELL PRIMARY.**

Drinks and nibbles provided

For more  
info contact Tash at

**bellpsfundraising@gmail.com**

*If you can't make it but have a great idea, feel free to email me your thoughts and I'll put them to the group.*



Despite only leaving about six weeks ago, the class of 2015 held a reunion back at Bell yesterday. They really haven't changed in that time. Except for the uniform. Pictured clockwise: Lucinda, Lucy, Georgie, Sunny, Matilda, Grace, Quinn, Harper (hiding), Joel, Maisie and Zeke.





Welcome back to school for 2016. I have had a refreshing and relaxing break and I am grateful to the Leadership team for their efficient running of the school in my absence.

The first day of school went very smoothly. There is a calm atmosphere and a very positive buzz in the air. The children enjoyed their first day and most parents were happy to see the school routine start up again.

We welcome 6 new staff to the school.

Jade Bedford – Prep B

Kerry Georgiou – 1/2K

Lachlan Raven – 5/6T

Maria Daskalou – 1/2M

Lisa Bass – 5/6L

Daniel Guglielmini – 3/4G

The website is regularly updated and you will find it very useful in keeping up to date and finding out what is happening. The info pack DET will begin installing a lift in the main building sometime in the near future. We have emptied what was the Prep room in preparation. This project will cause some considerable disruption and we will need to work around it.

### Future Planning

The school is currently going through the process of establishing an enrolment ceiling. Once approved the places will be offered to those families for whom we are the closest school, siblings of current students and all other students in order of their closeness to the school.

This DET decision will take the pressure off our resources and allow for more predictable planning.

### Use of Grounds

I regularly write in the Bell News about the use of school grounds after hours. The vast majority of people use the grounds respectfully and enjoy the open spaces and equipment. However

there are occasionally behaviours by some that are inappropriate and create a risk to the health and safety of others.

There has been a group of teenage boys hanging around in the school grounds in recent weeks. They have been behaving dangerously and have been threatening and offensive to both staff and families. We also had to clean up broken glass on the basketball court for the start of school.

The grounds are closed on one Sunday per month to allow the Department of Justice team to do their work in the grounds. They do essential basic cleaning and maintenance for us but have to leave if others are in the grounds (see Bell News Dec) The school grounds are not public space and are DET property. I have the right to deny access to the grounds at anytime.

If you are aware of any dangerous or inappropriate behaviour in the grounds after hours please dial 000 and inform the police. Please give me a call or send an email if there is anything I need to know about.

If you should want to use the grounds for family events such as a birthday party, please check with the school first. For safety reasons I schedule work such as tree pruning or maintenance on weekends. The lift installation project will create a building site and movement of plant and equipment that may well require the grounds to be closed on weekends. It is unwise to allow your children to play in the grounds unsupervised.

Please take note of any signs or locked gates informing you that the grounds are closed.

The dates for the Bell Sunday crew this year are:

14th Feb 13th March

24th April 22nd May

19th June 17th July

14th August 11th September

9th October 6th November

4th December

*Cresten Pearce*

Principal

A big THANK YOU to Julie Kelly who went above and beyond the call of duty in helping clear out and dry out the uniform shop after being flooded by the weekend downpour. The smell was horrendous so it really was a big ask.



Julie Kelly in action.

### New Bell Times

The start and end time bells are the same but we have new bell times during the day for recess and lunch:

9.00 Start of School

10.40 Recess

11.10 End of Recess

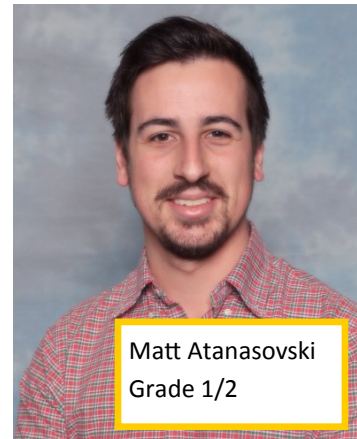
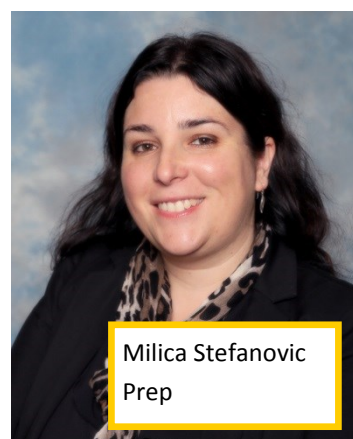
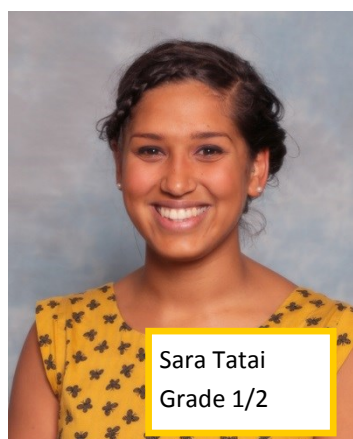
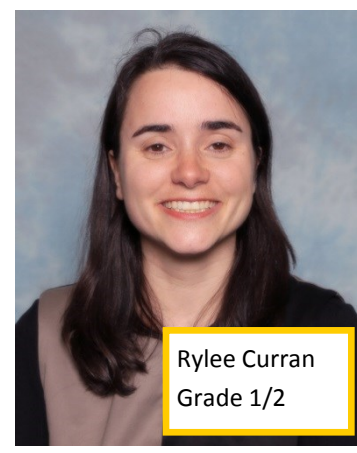
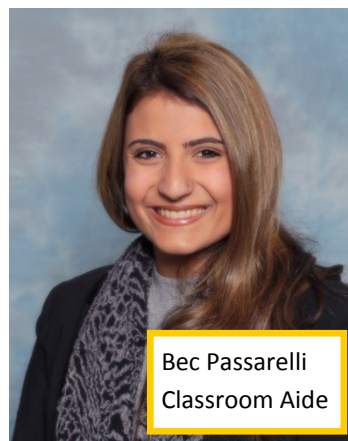
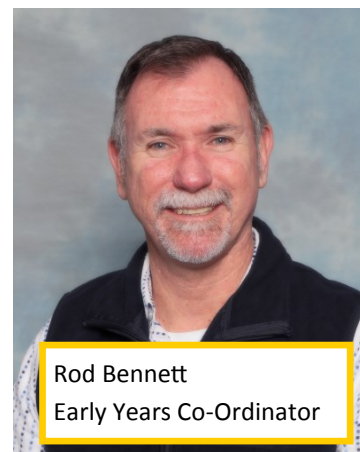
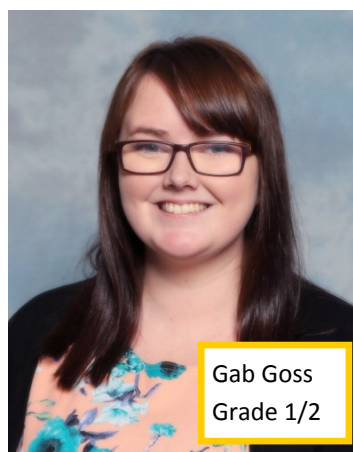
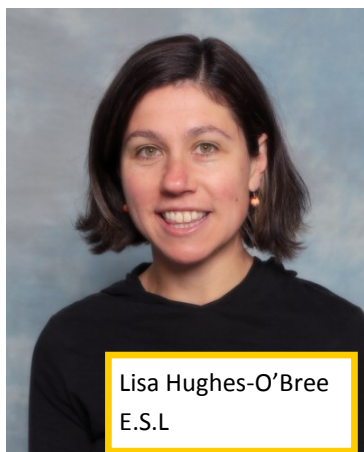
12.50 Lunch

1.50 End of Lunch

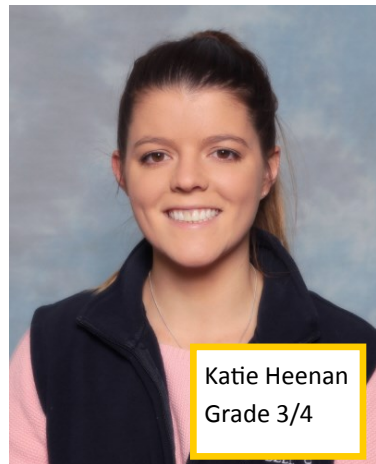
3.30 End of School

3.45 End of Yard Supervision

# Bell Roll Call 2016







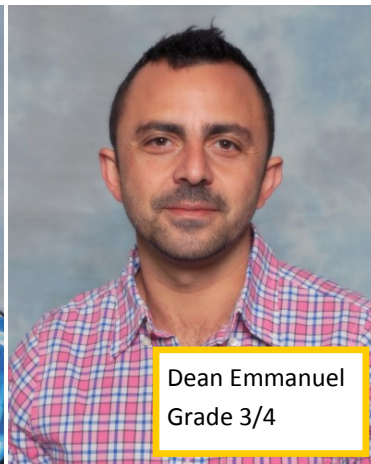
Katie Heenan  
Grade 3/4



Chelsea Kneale  
Art



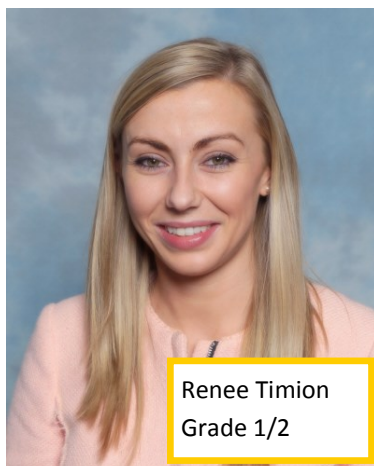
Marg Sneddon  
Assistant Principal



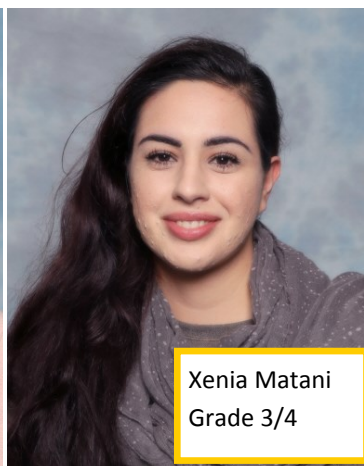
Dean Emmanuel  
Grade 3/4



Joanne Taylor  
Admin



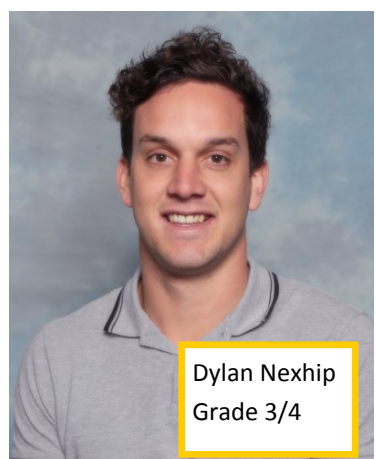
Renee Timion  
Grade 1/2



Xenia Matani  
Grade 3/4



Angela Georgiou  
Grade 3/4



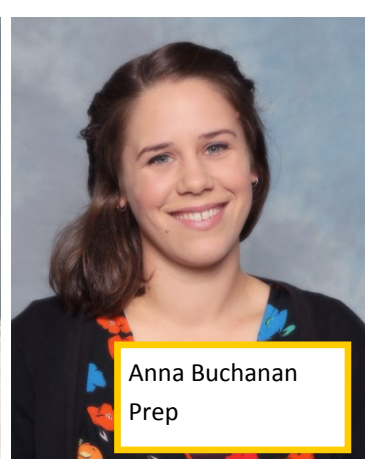
Dylan Nexhip  
Grade 3/4



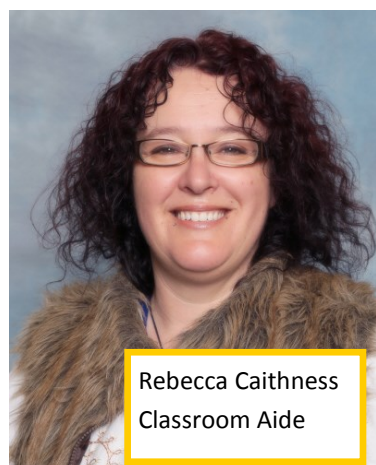
Lily McKeown  
Classroom Aide



Sophie Gidley  
Grade 5/6



Anna Buchanan  
Prep



Rebecca Caithness  
Classroom Aide



Josh Grogan  
P.E



Betty Tzelepis  
Grade 5/6



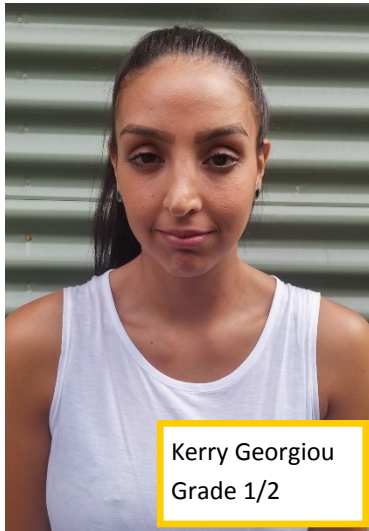
Andrew Williamson  
Music

# Bell Roll Call 2016

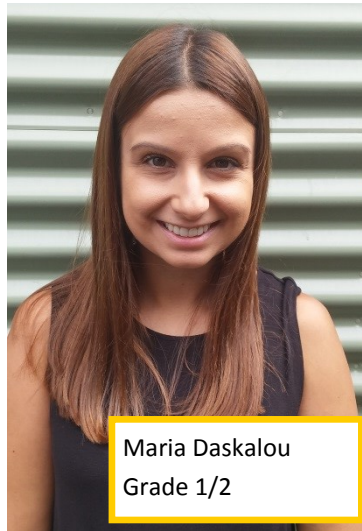




Lisa Bass  
Teacher



Kerry Georgiou  
Grade 1/2



Maria Daskalou  
Grade 1/2



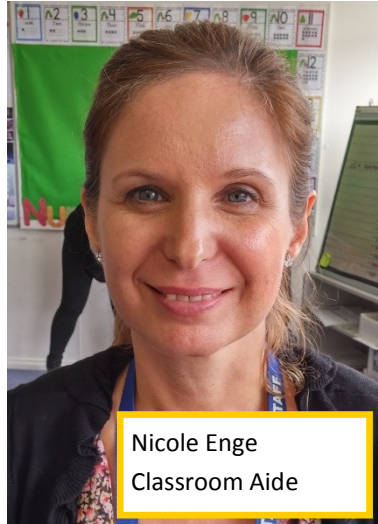
Tania Levens  
Admin



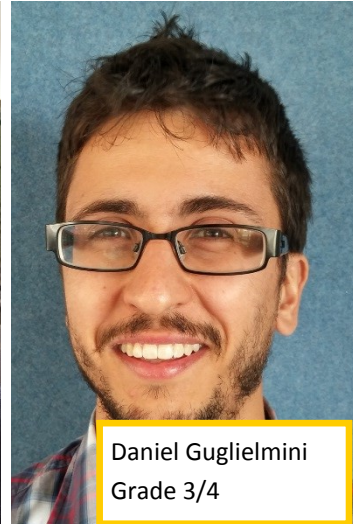
Lachlan Raven  
Grade 5/6



Jade Bedford  
Prep



Nicole Enge  
Classroom Aide



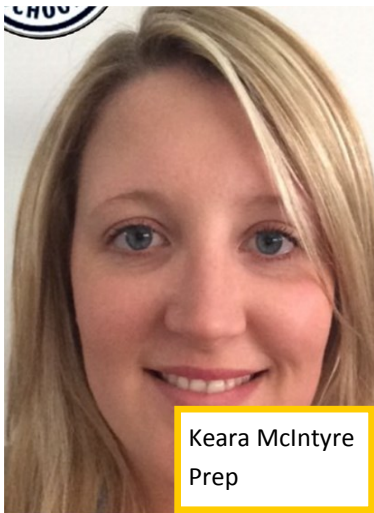
Daniel Guglielmini  
Grade 3/4



Joy O'Neill  
Prep



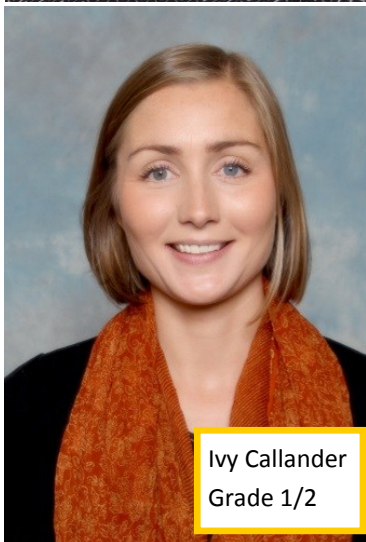
Kate Lovett  
Classroom Aide



Keara McIntyre  
Prep



Sue King  
Crossing / Admin



Ivy Callander  
Grade 1/2

# Bell Roll Call 2016

# COMMUNICATION GUIDELINES

## How do I receive information about school?

What	Information	How	When
Bell News	General school news	hard copy sent home with your child, by	Fortnightly,
School Calendar	Monthly calendar information Notices reminders	hard copy sent home with your child, by email and on the website	Fortnightly, Alternates with Bell News
Grade news-letters	Area specific information, grade news, timetables and upcoming events, students work and contact details	hard copy sent home with your child, by email and on the website	Beginning of every term
Grade level blogs Specialist area blogs	Area specific information, grade news, timetables and upcoming events, students	Links published through grade newsletters, on the webpage and in Bellnews	Online 24/7
Webpage	Sections include News Our Profile Transitions Community Policies and forms Oshclub Extra-curricular Gallery Links Contact Bellnews extra	<a href="http://www.bellps.vic.edu.au">http://www.bellps.vic.edu.au</a>	Online 24/7
Reports	Teacher comments and student assessments on academic and social development	Hard copy sent home with your child	At the end of terms 2 and 4
3 way Conferences	Teacher, parent and student meetings held to set student goals and share progress	Meetings are publicized and parents make booking online. A flyer is sent home to parents giving booking information and details	In early term 1 and at the end of term 2 every year.
Information Sessions	Grade management details, curriculum information, community interest topics	Advertised through Bellnews, grade newsletters, webpage and email	Across the school year and usually in the early evening



# COMMUNICATION GUIDELINES

Want to talk to someone?

<p>Contact the teacher</p> <p>Contact the area coordinator</p> <p>Contact the Welfare coordinator, Principal or Assistant Principal</p> <p>If not sure who you need, contact the office staff and they will help.</p>	<p>Any school matter relating to your child or family. It may be necessary to book a meeting time.</p>	<p>In person</p> <p>By phone 9480 5622</p> <p>By email</p> <p>Email addresses are published in newsletters and grade information handouts</p> <p>Any email sent to <a href="mailto:bell.ps@edumail.vic.gov.au">bell.ps@edumail.vic.gov.au</a> will be forwarded on.</p>	<p>School business hours or anytime online</p>
<p>Office Staff</p> <p>Uniform Coordinator</p>	<p>Any administration matters such as excursion charges, fees, uniform orders and enrolment details.</p>	<p>In person</p> <p>By phone 9480 5622</p> <p>By email</p> <p>Any email sent to <a href="mailto:bell.ps@edumail.vic.gov.au">bell.ps@edumail.vic.gov.au</a> will be forwarded on.</p>	<p>School office hours are 8.30 am to 4.30pm on school days..</p>
<p>Useful Links</p> <p><a href="http://www.bellps.vic.edu.au">http://www.bellps.vic.edu.au</a></p> <p><a href="http://www.education.vic.gov.au/school/parents/primary/Pages/default.aspx">http://www.education.vic.gov.au/school/parents/primary/Pages/default.aspx</a></p> <p><a href="http://www.education.vic.gov.au/school/parents/financial/Pages/default.aspx">http://www.education.vic.gov.au/school/parents/financial/Pages/default.aspx</a></p>			



## Curriculum Day Friday March 4th

This is a pupil-free day so no students are to attend school on this day. However, Oshclub may run for the day depending on numbers. Please see in Ann in Oshc to express interest in attending.





## Bright Sparks Creative Workshops Sessions at Bell Primary School - Term 1

Bright Sparks is a creative arts program designed to help children learn about themselves and develop a sense of inner strength, promoting confidence, resilience and general wellbeing.

Children create artwork that is meaningful to them through a variety of creative media such as; painting, drawing, clay and recycled art materials.

Sessions are run by an Art Therapist and are beneficial for all children from Prep to Grade 3. Individual Art Therapy sessions are also available.

3.30pm - 5.30pm Tuesdays, commencing February 16.

\$150 / \$130 (concession) for a 6 week course or \$30 per session.

The Art Room, Bell Primary School.

**Bookings essential by Friday, February 12.**

Contact Naomi on 0421 914 220 or email: [naomi@brightsparks.id.au](mailto:naomi@brightsparks.id.au)

*Naomi Williams (M. A. Arts Therapy) is a Creative Arts Therapist with 11 years experience facilitating creative workshops, individual art therapy sessions and resilience programs for children.*



2016  
Darebin  
community  
and

# kite festival

Edwardes Lake Park  
Reservoir

**Sunday 20 March**  
11am – 6pm

Performances // Workshops //  
Food & Community Stalls //  
Pet Expo // Activities //  
Storytelling // Kite Flying  
...and more!

 Darebin  
arts.    



ABN 83 635 484 779

## Keyboard/Piano and Guitar Lessons

Classes will be commencing next week from Monday, February 8th.

Look out for an email late this week regarding your child's lesson day/time.

Please make sure I have your current contact details (email address). For any other enrolment queries please contact me on 9480 0235 or [jacintagn@optusnet.com.au](mailto:jacintagn@optusnet.com.au).

Regards,

Jacinta Guerin



[www.talkingthetalksexed.com.au](http://www.talkingthetalksexed.com.au)

**Save the Date: Monday 7th March 2016 7.30pm – 9.00pm**

**What: Sexual Health Education for Parents**

**Where: Bell Primary School**

**Who: Parents and carers from Bell Primary School**

Learn how to tailor conversations with your children about:

- ✓ Healthy, Positive & Respectful Relationships
- ✓ Conception and Birth
- ✓ Body Safety
- ✓ Puberty
- ✓ Internet and social media safety

**More details in the coming weeks**



# Interested in Violin lessons at Bell Primary?

Violin lessons at Bell are available during school hours with Violin teacher Renee Bufton. Lessons are available for all year levels and abilities. A small number of violins are also available for hire per term. If you would like any further information, please don't hesitate to contact me or collect a parent information sheet from the office.

email: [reenebufton@gmail.com](mailto:reenebufton@gmail.com)

phone: 0402 307370

website: [www.reenebufton.com](http://www.reenebufton.com)



## Qkr! – The Preferred Payment Option at Bell Primary

Qkr! by MasterCard is a FREE live app that is the preferred method of payment for families at Bell Primary School.

The Qkr! app may be downloaded from the Apple app store for iPhones and iPads or from Google Play for Android phones and tablets.

After downloading the app and registering, simply scan the QR code on the left using the Qkr! code scanner or type BELLPS after tapping the magnifying glass on the top right of the home screen of Qkr!

The app will then always recognise you as part of the Bell Primary School community making future payments even easier.

Using Qkr! you can pay your Essential Items (Books & Requisites Levy), Camps, Excursions, Interscholar Sport, etc. Optional Extras and Voluntary Financial Contributions can also be paid using Qkr! and when purchasing items with our Uniform Shop.



Qkr! will also provide you with your receipt confirming that your payment has been successful.

Please note that your child's payment reference number i.e. 14309XXXXX can only be used for them and not their siblings.

Download the Qkr! app today on Google Play or the App Store.



## NORTHCOTE HIGH SCHOOL – TOURS AND OPEN DAY 2016

### School Tours commencing Tuesday 9 Feb

School day tours for prospective parents and students run several times per week in Term 1 and early Term 2. The tours depart from our foyer at 9.10 am and take about one hour. See our website for exact Term 1 dates. Please ring to book a place as numbers are limited (9488 2300)

### School Open Morning – Wednesday April 27, 2016

Open Morning will be held on Wednesday 27 April between 9 am and 12 noon. All prospective parents and students are welcome, and there is no need to book in advance for this event.

There is an information session at 6.00pm that night, for parents who were not able to come during the Open Morning

### ACE Program Testing – Saturday May 7(TBC)

Further information on the ACE program is on our website

Applications close Friday 22 April.



NORTHCOTE HIGH SCHOOL

Northcote High School, St, Georges Rd, Northcote, 3070, Australia. Phone 9488 2300



# The National Disability Insurance Scheme (NDIS)

The National Disability Insurance Scheme is the new way of providing individualised support for people with disability, their families and carers. Disability could affect anyone and having the right support makes a big difference. The NDIS provides eligible people a flexible, whole-of-life approach to the support needed to pursue their goals and aspirations and participate in daily life.

The National Disability Insurance Scheme (NDIS) will ensure that people with disability are given every opportunity to make their own decisions and exercise choice and control. They recognise that the role of families and carers is often essential in supporting people with disability to realise these goals and will include them in discussions about supports.

The NDIS will provide information, referral and linkage to ensure families and carers are able to access supports in the community to assist them in their role. Guardians or nominees of people with disability play an important role in the NDIS to represent the interest of the person and they can contact us on behalf of the person.

Information for families and carers:

The National Disability Insurance Agency knows that families and carers, are partners in the support of people with disability. Access to the NDIS website is found at [www.ndis.gov.au](http://www.ndis.gov.au)

Roll out of the full scheme will commence progressively from July 2016.

In preparation for the Roll out of the NDIS Croxton School and Bell Primary School are holding joint parent/carers information training sessions. The proposed dates are:-

Monday, 22 February, 2015   Monday, 29 February, 2015   Monday, 7 March, 2015   Monday, 21 March, 2015

These sessions are 3 hours in duration and will be scheduled from 9:30am to 12:30am at Croxton School.

159 Beaconsfield Parade, Northcote VIC 3070   (03) 9482 5482

National Disability Insurance Scheme Introduction Program: Carers, families & the system

## Program Outline

The health sector is rapidly consolidating the move from service-directed to a consumer directed approach with the introduction of NDIS. For some carers, this period of transition may create a sense of uncertainty. There may be a struggle to build a new set of skills, a process to deal with the present, and move towards the new. This program explores future planning and offers carers an opportunity to acknowledge their current situation and to work towards a sustainable future.

The target audience is carers looking after someone with a disability. Carers will have access to a range of resources and an invitation to engage with other carers in an online discussion forum following the program.

The program consists of 4 x 3 hour sessions. Carers are asked to commit to all sessions, as each builds on the last. They also need to attend without the person they care for.

### Session 1: Preparing for change

- Exploring the changes in disability care
- Why think ahead?
- What's person-centred planning?

### Session 2: Adapting to change

- Emergency planning
- Making a start on future plans
- Expanding social & community networks

### Session 3: Managing the plan

- What are the options?
- Building skills
- Where to get help?

### Session 4: Making your voice heard

- Know your rights
- Communicating with Professionals
- Advocacy



# Events Calendar

# February 2016

Mon	Tue	Wed	Thu	Fri	Sat	Sun
1	2	3 Prep Intro Interviews 1	4 3.15 Uniform Shop	5	6	7
8 Playgroup 9.00-11.00 9.00 Jnr Assembly 8.45 Uniform Shop	9	10 Prep Intro Interviews 2	11 3.15 Uniform Shop	12	13	14 **Sunday Crew - Grounds closed
15 Playgroup 9.00-11.00 9.00 Snr Assembly 8.45 Uniform Shop	16	17 Prep Intro Interviews 3	18 3.15 Uniform Shop Year 3/4 Kite Festival Workshop	19 7.00-9.00 Fundraising Suggest Fest	20	21
22 Playgroup 9.00-11.00 9.00 Whole School Assembly 8.45 Uniform Shop	23	24 Prep Intro Interviews 4	25 3.15 Uniform Shop	26	27	28

\*\*The Sunday Crew is a Department of Justice team who work here on one Sunday each month from 8.30am until 4.30pm. They complete various maintenance and garden works around the school grounds under the direction of the manager. The grounds are closed on these days to allow them to go about their tasks uninterrupted. Please observe all signage.